

EN

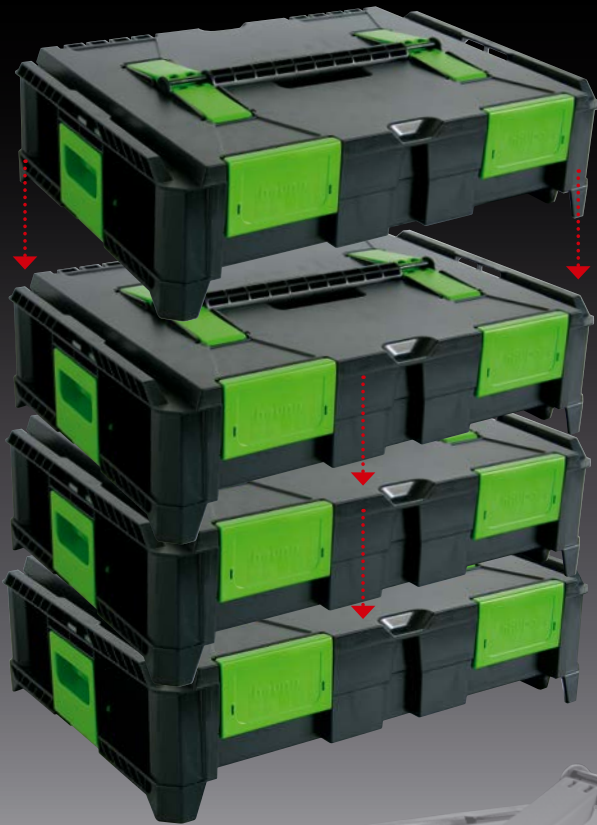
Offer
International

SysCon 2015

System-Containers



haupa[®]



HAUPA SysCon product profile:

The basic idea behind the System Container is that the individual containers can be connected to each other to enable easy transport thus ensuring that simple access is provided to the contents of all containers. The containers may be offered in an empty state or with contents. If sold with contents, the contents should encompass assortments which include connection materials, fixture materials and tools.

In addition, the System Container should also acts as a transportation method of HAUPA Smart Hydraulics since the stacking concept enables the hydraulic pressing tools to be organised along with the appropriate cable lugs thus forming a system unit.

The four conical feet on the uppermost container are automatically guided into the correct position on the container below. The connection of the containers is made without expenditure of force, simply by placing them on top of one another. The snap closures on the side mean that the containers can be separated just as easily. The closures are pulled gently outwards which enables lifting.

When stacking, the container handles may be extended or folded in.

The design of the container ensures that water cannot enter the container.

Quality profile:

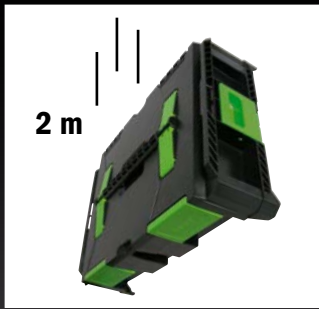
In order to ensure maximum stability, the containers are made from ABS. ABS is capable of withstanding both high and low temperatures without distorting or breaking.

The hard tests under a variety of conditions:

Fall tests with both empty and filled containers, stress tests, bounce tests and tensile tests have proved the robustness of the container and of components such as handles, closing flaps, snap closures etc. →

Target group:

Due to the high quality and the extreme robustness afforded by this product, the target users are professionals: Trade - Industry - Laboratories, etc.



Test simulation/Description	Temperature in °C	Fall height	Explanation/Observation
Fall test (empty)	+20° / -10° +20° / -10° +20° / -10° +20° / -10° +20° / -10°	h = 0,5 m h = 1,0 m h = 1,5 m h = 2,0 m h = 2,5 m	no damage to the product no damage to the product no damage to the product no damage, but the snap closures and closing flaps opened up minor break on the lid of the inner housing where the lid closes on the underside



Test simulation/Description	Temperature in °C	Fall height	Explanation/Observation
Ultimate stress test (Box closed)	+20° / -10°	h = 2,0 m	no damage to the product



Test simulation/Description	Temperature in °C	Fall height	Explanation/Observation
Fall test (Content: 5 kg)	+20° / -10° +20° / -10° +20° / -10° +20° / -10°	h = 0,5 m h = 1,0 m h = 1,5 m h = 2,0 m	no damage to the product no damage to the product no damage, but the snap closures and closing flaps opened up no damage, but the snap closures and closing flaps opened up



Test simulation/Description	Temperature in °C	Jump height	Explanation/Observation
Bounce test (90 kg)	+20° / -10°	h = 0,3 m	it is not possible to destroy the product by this test



Test simulation/Description	Temperature in °C	Content in kg	Explanation/Observation
Handle	+20° / -10° +20° / -10°	60 70	No damage to the handle No damage, but the snap closures and closing flaps opened up



Test simulation/Description	Temperature in °C	Content in kg	Explanation/Observation
Snap closures and closing flaps	+20° / -10° +20° / -10°	60 70	No damage to the snap closures No damage to the closing flaps No damage, but the snap closures and closing flaps opened up

SysCon S insulated terminals & 210761

Content: 1500 insulated terminals

- 1 220370 ABS plastic box „SysCon S“
- 1 220375 Assortment insert „SysCon“
- 1 220399 Foam „SysCon“ 395 x 300 x 10 mm
- 1 210761 Crimping pliers for insulated terminals 0,5 - 6 mm²

200	260350	Butt connectors, red	0,5/1,0	PVC
200	260352	Butt connectors, blue	1,5/2,5	PVC
100	260354	Butt connectors, yellow	4,0/6,0	PVC
200	260256	Ring terminals, red	0,5/1,0	M4 PVC
200	260258	Ring terminals, red	0,5/1,0	M5 PVC
200	260270	Ring terminals, blue	1,5/2,5	M4 PVC
200	260272	Ring terminals, blue	1,5/2,5	M5 PVC
100	260288	Ring terminals, yellow	4,0/6,0	M6 PVC
100	260290	Ring terminals, yellow	4,0/6,0	M8 PVC

Art. No. 220381

1.500-pcs.



SysCon S end sleeves & 210804

Content: 4100 insulated end sleeves

- 1 220370 ABS plastic box „SysCon S“
- 1 220375 Assortment insert „SysCon“
- 1 220399 Foam „SysCon“ 395 x 300 x 10 mm
- 1 210804 Crimping pliers for end sleeves 0,08 - 10 mm²

1000	270805	Insulated end sleeves, red	1/8
1000	270802	Insulated end sleeves, grey	0,75/8
500	270807	Insulated end sleeves, black	1,5/8
500	270811	Insulated end sleeves, blue	2,5/8
500	270815	Insulated end sleeves, grey	4/10
100	270818	Insulated end sleeves, yellow	6/12
200	270788	Twin-end sleeves, black	1,5/8
200	270792	Twin-end sleeves, blue	2,5/10
100	270796	Twin-end sleeves, grey	4,0/12

Art. No. 220382

4.100-pcs.



SysCon S end sleeves & 210842

Content: 4950 insulated end sleeves

- 1 220370 ABS plastic box „SysCon S“
- 1 220399 Foam „SysCon“ 395 x 300 x 10 mm
- 1 220375 Assortment insert „SysCon“
- 1 210842 Crimping pliers for end sleeves 1 - 10 mm²

1000	270805	Insulated end sleeves, red	1/8
1000	270807	Insulated end sleeves, black	1,5/8
1000	270811	Insulated end sleeves, blue	2,5/8
500	270815	Insulated end sleeves, grey	4/10
200	270818	Insulated end sleeves, yellow	6/12
200	270822	Insulated end sleeves, red	10/12
500	270806	Insulated end sleeves, red	1/12
300	270027	Insulated end sleeves, black	1,5/18
250	270813	Insulated end sleeves, blue	2,5/18

Art. No. 220390

4.950-pcs.



SysCon S insulated terminals / end sleeves & 210842

Content: insulated terminals and end sleeves

- 1 220370 ABS plastic box „SysCon S“
- 1 220375 Assortment insert „SysCon“
- 1 220399 Foam „SysCon“ 395 x 300 x 10 mm
- 1 210784 Crimping pliers for insulated terminals and end sleeves

200	260350	Butt connectors, red	0,5-1,0	PVC
200	260352	Butt connectors, blue	1,5-2,5	PVC
200	260256	Ring terminals, red	0,5-1,0	M4 PVC
200	260272	Ring terminals, blue	1,5-2,5	M5 PVC
200	260274	Ring terminals, blue	1,5-2,5	M6 PVC
1000	270807	End sleeves, black	1,5/8	
1000	270811	End sleeves, blue	2,5/8	
500	270815	End sleeves, grey	4/10	
200	270818	End sleeves, yellow	6/12	

Art. No. 220391

4.950-pcs.



SysCon M assortment & HUPStar & 211930 & 201085

Content:

- 1 220372 ABS plastic box „SysCon M“
- 1 220374/S Assortment insert SysCon with foam
- 1 220355 Assortment insert „SysCon“
- 1 213086 Crimping pliers HUPStar
- 1 211930 Automatic wire stripper
- 1 201085 Cable cutter

100	270804	Insulated end sleeves, red	1/8	
100	270808	Insulated end sleeves, black	1,5/8	
100	270810	Insulated end sleeves, blue	2,5/8	
100	270814	Insulated end sleeves, grey	4/10	
100	270818	Insulated end sleeves, yellow	6/12	
100	270822	Insulated end sleeves, red	10/12	
100	270826	Insulated end sleeves, blue	16/12	
100	291120	Butt connectors, tinned	1,5-2,5	
100	291124	Butt connectors, tinned	4-6	
100	291126	Butt connectors, tinned	10	
100	260350	Butt connectors, red	0,5-1,0	PVC
100	260352	Butt connectors, blue	1,5-2,5	PVC
100	260354	Butt connectors, yellow	4,0-6,0	PVC
100	260256	Ring terminals, red	0,5-1,0	M4 PVC
100	260258	Ring terminals, red	0,5-1,0	M5 PVC
100	260270	Ring terminals, blue	1,5-2,5	M4 PVC
100	260272	Ring terminals, blue	1,5-2,5	M5 PVC
100	260288	Ring terminals, yellow	4,0-6,0	M6 PVC
100	291120	Butt connectors, tinned	1,5-2,5	
100	291124	Butt connectors, tinned	4-6	

Art. No. 220769

2.000-pcs.



SysCon S assortment & X-Crimp

Content:

1	220370	ABS plastic box „SysCon S“		
1	220375	Assortment insert „SysCon“		
1	220399	Foam „SysCon“ 395 x 300 x 10 mm		
1	211690	Crimping pliers X-Crimp		
1	210763/E	Die for end sleeves	0,5-4	
1	210765/E	Die for end sleeves	6-16	
1	211676/E	Die for Twin-end sleeves		
100	270804	Insulated end sleeves, red	1/8	
100	270808	Insulated end sleeves, black	1,5/8	
100	270810	Insulated end sleeves, blue	2,5/8	
100	270788	Twin-end sleeves, black	1,5/8	
100	260350	Butt connectors, red	0,5-1,0	PVC
100	260352	Butt connectors, blue	1,5-2,5	PVC
100	260256	Ring terminals, red	0,5-1,0	M4 PVC
100	260270	Ring terminals, blue	1,5-2,5	M4 PVC
50	260288	Ring terminals, yellow	4,0-6,0	M6 PVC

Art. No. 220765

850-pcs.



SysCon M assortment & X-Crimp

Content:

1	220372	ABS plastic box „SysCon M“		
1	220375/S	Assortment insert SysCon with foam		
1	220355	Assortment insert „SysCon“		
1	211690	Crimping pliers X-Crimp		
1	210763/E	Dies for end sleeves	0,5-4	
1	210765/E	Die for end sleeves	6-16	
1	211676/E	Die for Twin-end sleeves		
1	211695/E	Die for shrink connector		
100	270800	Insulated end sleeves	0,5/8	
100	270803	Insulated end sleeves	0,75/8	
100	270804	Insulated end sleeves, red	1/8	
100	270808	Insulated end sleeves, black	1,5/8	
100	270810	Insulated end sleeves, blue	2,5/8	
100	270814	Insulated end sleeves, grey	4/10	
100	270818	Insulated end sleeves, yellow	6/12	
100	270822	Insulated end sleeves, red	10/12	
100	270826	Insulated end sleeves, blue	16/12	
100	270778	Twin-end sleeves, white	0,5/8	
100	270780	Twin-end sleeves, grey	0,75/8	
100	270784	Twin-end sleeves, red	1/8	
100	270788	Twin-end sleeves, black	1,5/8	
100	270792	Twin-end sleeves, blue	2,5/10	
100	270796	Twin-end sleeves, grey	4,0/12	
100	363500	Butt connectors, shrink	0,25-1,5	
100	363502	Butt connectors, shrink	1,5-2,5	
50	363504	Butt connectors, shrink	4,0-6,0	
100	260350	Butt connectors, red	0,5-1,0	PVC
100	260352	Butt connectors, blue	1,5-2,5	PVC
50	260354	Butt connectors, yellow	4,0-6,0	PVC
100	260256	Ring terminals, red	0,5-1,0	M4 PVC
100	260258	Ring terminals, red	0,5-1,0	M5 PVC
100	260270	Ring terminals, blue	1,5-2,5	M4 PVC
100	260272	Ring terminals, blue	1,5-2,5	M5 PVC
50	260288	Ring terminals, yellow	4,0-6,0	M6 PVC
50	260290	Ring terminals, yellow	4,0-6,0	M8 PVC

Art. No. 220766

2.500-pcs.



SysCon S assortment & HUPStar

Content:

1	220370	ABS plastic box „SysCon S“		
1	220375	Assortment insert „SysCon“		
1	220399	Foam „SysCon“ 395 x 300 x 10 mm		
1	213086	Crimping pliers HUPStar		
100	270804	Insulated end sleeves, red	1/8	
100	270808	Insulated end sleeves, black	1,5/8	
100	270810	Insulated end sleeves, blue	2,5/8	
100	270814	Insulated end sleeves, grey	4/10	
100	260350	Butt connectors, red	0,5-1,0	PVC
100	260352	Butt connectors, blue	1,5-2,5	PVC
100	260354	Butt connectors, yellow	4,0-6,0	PVC
100	291120	Butt connectors, tinned	1,5-2,5	
100	291124	Butt connectors, tinned	4-6	

Art. No. 220767

900-pcs.



SysCon M assortment & HUPStar

Content:

1	220372	ABS plastic box „SysCon M“		
1	220375/S	Assortment insert SysCon with foam		
1	220355	Assortment insert „SysCon“		
1	213086	Crimping pliers HUPStar		
100	270800	Insulated end sleeves	0,5/8	
100	270803	Insulated end sleeves	0,75/8	
100	270804	Insulated end sleeves, red	1/8	
100	270808	Insulated end sleeves, black	1,5/8	
100	270810	Insulated end sleeves, blue	2,5/8	
100	270814	Insulated end sleeves, grey	4/10	
100	270818	Insulated end sleeves, yellow	6/12	
100	270822	Insulated end sleeves, red	10/12	
100	270826	Insulated end sleeves, blue	16/12	
100	291119	Butt connectors	0,5-1	
100	291120	Butt connectors, tinned	1,5-2,5	
100	291124	Butt connectors, tinned	4-6	
100	291126	Butt connectors, tinned	10	
100	290622	Ring insulated terminals	0,25-1,5	M4
100	290628	Ring insulated terminals	1,5-2,5	M4
100	290636	Ring insulated terminals	2,5-6	M4
100	290648	Ring terminals DIN 46234	6	M6
100	290660	Ring terminals DIN 46234	10	M8
100	260350	Butt connectors, red	0,5-1,0	PVC
100	260352	Butt connectors, blue	1,5-2,5	PVC
100	260354	Butt connectors, yellow	4,0-6,0	PVC
100	260256	Ring terminals, red	0,5-1,0	M4 PVC
100	260258	Ring terminals, red	0,5-1,0	M5 PVC
100	260270	Ring terminals, blue	1,5-2,5	M4 PVC
100	260272	Ring terminals, blue	1,5-2,5	M5 PVC
100	260288	Ring terminals, yellow	4,0-6,0	M6 PVC
100	260290	Ring terminals, yellow	4,0-6,0	M8 PVC

Art. No. 220768

2700-pcs.



SysCon S cable lugs DIN & 210805 K

Content: 380 cable lugs DIN 46235, tinned

- 1 220370 ABS plastic box „SysCon S”
- 2 220376 Foam „SysCon” 395 x 300 x 15 mm
- 1 500270 Foam for sets 160 x 400 mm
- 1 210805 K Crimping pliers hexagonal crimping 6 – 50 mm²

50	290404	Cable lugs DIN	6	M6
50	290406	Cable lugs DIN	6	M8
50	290410	Cable lugs DIN	10	M6
50	290412	Cable lugs DIN	10	M8
30	290418	Cable lugs DIN	16	M8
40	290420	Cable lugs DIN	16	M10
25	290426	Cable lugs DIN	25	M8
25	290428	Cable lugs DIN	25	M10
20	290434	Cable lugs DIN	35	M8
20	290436	Cable lugs DIN	35	M10
20	290440	Cable lugs DIN	50	M8

Art. No. 220385

DIN, 380-pcs.



SysCon S cable lugs standard & 210805

Content: 380 cable lugse standard, tinned

- 1 220370 ABS plastic box „SysCon S”
- 2 220376 Foam „SysCon” 395 x 300 x 15 mm
- 1 500270 Foam for sets 160 x 400 mm
- 1 210805 Crimping plier hexagonal crimping 6 – 50 mm²

50	290934	Cable lugs standard	6	M6
50	290936	Cable lugs standard	6	M8
50	290940	Cable lugs standard	10	M6
50	290942	Cable lugs standard	10	M8
30	290952	Cable lugs standard	16	M8
40	290954	Cable lugs standard	16	M10
25	290960	Cable lugs standard	25	M8
25	290962	Cable lugs standard	25	M10
20	290968	Cable lugs standard	35	M8
20	290970	Cable lugs standard	35	M10
20	290978	Cable lugs standard	50	M8

Art. No. 220386

standard, 380-pcs.



SysCon S plate screws

Content: 2000 universal screws

- 1 220370 ABS plastic box „SysCon S”
- 1 220399 Foam „SysCon” 395 x 300 x 10 mm
- 1 220375 Assortment insert „SysCon”

200	790327	Universal screw pan head PH2	4,2 x 19
200	790329	Universal screw pan head PH2	4,2 x 25
200	790332	Universal screw pan head PH2	4,2 x 31
200	790333	Universal screw pan head PH2	4,2 x 38
200	790450	Assembly screw pan head with washer PH2	4,2 x 13
200	790452	Assembly screw pan head with washer PH2	4,2 x 25
200	790456	Assembly screw with washer PH2	4,2 x 45
200	790470	Assembly screw with washer, self-tapping PH2	4,2 x 13
200	790423	Plate screw DIN 7504M	4,2 x 16
200	790426	Plate screw DIN 7504M	4,2 x 25



Art. No. 220398

2.000-pcs., PH2



SysCon M tool case set

Content: 17 tools

- 1 220372 ABS plastic box „SysCon M“
- 1 220374 Tools insert „SysCon“
- 1 220399 Foam „SysCon“ 395 x 300 x 10 mm
- 1 220379 Tool plate „SysCon“ 11 compartments

- 210696 Spanner for switch-cabinets
- 210695 Automatic wire stripper 0,2 – 6 mm²
- 263842 VDE electrical tape 19 mm x 20 mm, black
- 263844 VDE electrical tape 19 mm x 20 mm, white
- 263860 VDE electrical tape 19 mm x 20 mm, green/yellow
- 200031 Cable stripping knife 8 – 28 mm²
- 211200 2C-VDE combination plier DIN 5244, 185 mm
- 211204 2C-VDE side cutter DIN 5238 B, 165 mm
- 211208 2C-VDE telephone plier DIN 5236 A, 200 mm, straight
- 101870 2C-VDE screwdriver PZ/FL 1
- 101872 2C-VDE screwdriver PZ/FL 2
- 181910 2C-VDE screwdriver 2,5 x 75 mm
- 101914 2C-VDE screwdriver 3,5 x 100 mm
- 101916 2C-VDE screwdriver 4,0 x 100 mm
- 101920 2C-VDE screwdriver 6,5 x 150 mm
- 101942 2C-VDE screwdriver PH1
- 101944 2C-VDE screwdriver PH2

Art. No. 220392

17-pcs.



SysCon M „Start VDE“

Content: 22 tools

- 1 220372 ABS plastic box „SysCon M“
- 1 220374 Tools insert „SysCon“
- 1 220399 Foam „SysCon“ 395 x 300 x 10 mm
- 1 220379 Tool plate „SysCon“ 11 compartments

- 240042 Aluminium spirit levels 400 mm
- 180184 Engineers' hammer 300 g
- 210695 Wire stripper Super Plus 0,2 – 6 mm²
- 200043 Universal stripper 0,2 – 4 mm²
- 211200 2C-VDE combination pliers DIN 5244, 185 mm
- 211217 2C-VDE heavy duty side cutters DIN 5238 A, 170 mm
- 211208 2C-VDE telephone pliers DIN 5236 A, 200 mm, straight
- 101999 2C-VDE screwdrivers set
- 101870 2C-VDE screwdriver with PZ slot profile PZ/FL 1
- 101872 2C-VDE screwdriver with PZ slot profile PZ/FL 2
- 180092 Electricians' chisels 10 x 250 mm
- 100647 Voltage tester VDE/GS
- 150090 Carpenters' pencil
- 150024 Paint scrapers 40 mm
- 150004 Water brushes
- 240002 Folding rules 2 m
- 150006 Plaster cup

Art. No. 220608

22-pcs.



SysCon S universal countersunk screws

Content: 1650 universal countersunk screws

- 1 220370 ABS plastic box „SysCon S“
- 1 220399 Foam „SysCon“ 395 x 300 x 10 mm
- 1 220375 Assortment insert „SysCon“

- | | | |
|------------|------------------------------|----------|
| 400 790015 | Universal countersunk screws | 3,5 x 20 |
| 200 790027 | Universal countersunk screws | 4,0 x 30 |
| 200 790029 | Universal countersunk screws | 4,0 x 40 |
| 200 790031 | Universal countersunk screws | 4,0 x 50 |
| 200 790041 | Universal countersunk screws | 4,5 x 40 |
| 100 790053 | Universal countersunk screws | 5,0 x 40 |
| 100 790054 | Universal countersunk screws | 5,0 x 50 |
| 100 790055 | Universal countersunk screws | 5,0 x 60 |
| 50 790064 | Universal countersunk screws | 6,0 x 60 |
| 100 790065 | Universal countersunk screws | 6,0 x 80 |



Art. No. 220389

1.650-pcs., PZ2/PZ3



SysCon S „SysCon FirstAid DIN“

Content:

220370 ABS plastic box „SysCon S“
220660/H 125-pcs. FirstAid set acc. „DIN 13 157 extended“

Art. No. 220660

125-pcs.



SysCon S „VDE-Socket“ 1/2“

complete with 1/2" tools. The plastic material used for socket sets is guaranteed to pass -40°C impact tests. This guarantee that the insulation value will not be compromised due to impact.

Content:

1 220370 ABS plastic box „SysCon S“

- Reversible ratchet 250 mm, 1/2"
- T-slip-on-keys 200 mm, 1/2"
- Extension 125 and 250 mm, 1/2"
- Sockets 1/2", 10, 11, 12, 13, 14, 17, 19, 22, 24, 27, 32 mm
- Dies for hexagon screws 1/2", 4, 5, 6, 8, 10 mm

Art. No. 220612

20-pcs., 1/2"



SysCon XL SafetySet

1 220650 ABS plastic box „SysCon XL“

Content:

- 1 120007 VDE gloves 1000 V size 10
- 1 120008 Electricians' protection helmet
- 1 120012 VDE NH fuse grip
- 1 120010 VDE electricians protection visor 1000 V

Art. No. 220652

5-pcs.



SysCon S „SocketMax“

1 220370 ABS plastic box „SysCon S“

Content:

- 12 Sockets 1/4" 4-4.5-5-5.5-6-7-8-9-10-11-12-13 mm
- 2 Extensions 1/4" 50 - 150mm
- 1 Adapter 3/8" x 1/4" for sliding handle
- 1 Kardanjoint 1/4"
- 1 Bit adapter 1/4"
- 1 Reversible ratchet 1/4"
- 13 Sockets 1/2" 10-11-12-13-14-15-17-19-22-24-27-30-32 mm
- 2 Extensions 1/2" 75 - 250 mm
- 1 Adapter 3/8" x 1/2" for sliding handle
- 1 Kardanjoint 1/2"
- 1 Reversible ratchet 1/2"
- 1 Ratchet screwdriver „Flex“
- 2 Adapter 50 - 80 mm
- 4 Bit 1/4" 50 mm PH 0 - 1 - 2 - 3
- 4 Bit 1/4" 50 mm PZ 0 - 1 - 2 - 3
- 2 Bit 1/4" 50 mm PZ/FL 1 - 2
- 4 Bit 1/4" 50 mm SQ 3 - 4 - 5 - 6 mm
- 6 Bit 1/4" 50 mm hexagon 2 - 2.5 - 3 - 4 - 5 - 6

Art. No. 220600

55-pcs., 1/4" + 1/2"



SysCon S socket wrench set "Torque" 1/4"

1 220370 ABS plastic box "SysCon S"

Content:

- 12 sockets 1/4" 4 - 4.5 - 5 - 5.5 - 6 - 7 - 8 - 9 - 10 - 11 - 12 - 13 mm
- 5 sockets 1/4" Tx, long version T20, T25, T27, T30, T40
- 4 sockets 1/4" Hex, long version 4, 5, 6, 8 without hole
- 2 extension bar 1/4", 50 and 150 mm
- 1 adapter 3/8" x 1/4" for extension bar work as T-handle
- 1 universal joint 1/4"
- 1 bit adapter 1/4"
- 1 reversible ratchet 1/4"
- 1 torque wrenches 1/4", 5 - 25 Nm
- 1 ratchet screwdriver "Flex"
- 2 adapter 50 and 80 mm
- 4 bits 1/4" 50 mm PH 0 - 1 - 2 - 3
- 4 bits 1/4" 50 mm PZ 0 - 1 - 2 - 3
- 2 bits 1/4" 50 mm PZ/FL 1 - 2
- 4 bits 1/4" 50 mm SQ 3 - 4 - 5 - 6 mm
- 6 bits 1/4" 50 mm hexagonal 2 - 2.5 - 3 - 4 - 5 - 6

Art. No. 220640

51-pcs., 1/4"



SysCon S socket wrench set "Torque" 1/2"

1 220370 ABS plastic box "SysCon S"

Content:

- 17 sockets 1/2"
 - 8 - 10 - 11 - 12 - 13 - 14 - 15 - 16 - 17 - 19 - 21 - 22 - 23 - 24 - 27 - 30 - 32 mm
- 5 sockets 1/2" Tx, long version T30, T40, T45, T50, T55
- 4 sockets 1/2" Hex, long version 8, 10, 12, 14 without hole
- 2 extension bar 1/2", 75 and 250 mm
- 1 adapter 3/8" x 1/2" for extension bar work as T-handle
- 1 universal joint 1/2"
- 1 reversible ratchet 1/2"
- 1 torque wrenches 1/2", 21 - 119 Nm

Art. No. 220642

32-pcs., 1/2"



Smart battery powered crimping tool „SO-6“

Hydraulic for interchangeable dies, crimping head 180° swivelling, Head can be opened, manual return flow after perfect pressure.

Extent of supply: 1 crimping tool, 1 charger, 1 battery, 1 strap, in SysCon box without dies.

Content:

- 1 220372 ABS plastic box „SysCon M“ (insert included)
- 1 216801 Battery powered crimping tool „SO-6“

- Pressing force in kN: 60 kN
- Working pressure in bar: 700
- Head can be opened
- Opening/ Hub: 17 mm
- Pressing width: slim
- Pressing time, battery-operated in seconds: ca. 5
- Battery charging time in minutes: 60
- Battery type: Li-Ion, 14,4 V, 3 Ah
- Cable lugs:
standard Cu 6-300 • DIN Cu 6-300 • DIN Al 16-240
- Connectors:
Cu 6-300 • DIN Cu 6-300 • DIN Al 16-240



Art. No. 216801

6 - 300 mm²

Video 216801

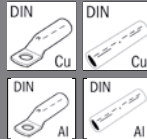


SysCon S set dies DIN

Content: 11 dies DIN

- 1 220370 ABS plastic box „SysCon S“
- 2 220377 Foam „SysCon“ 395 x 300 x 20 mm²

- 1 216836 16
- 1 216838 25
- 1 216840 35
- 1 216842 50
- 1 216844 70
- 1 216846 95
- 1 216848 120
- 1 216850 150
- 1 216852 185
- 1 216854 240
- 1 216856 300



300-06

Art. No. 220614

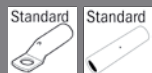
DIN, 11-pcs.

SysCon S set dies standard

Content: 11 dies standard

- 1 220372 ABS plastic box „SysCon S“
- 2 220377 Foam „SysCon“ 395 x 300 x 20 mm²

- 1 216810 16
- 1 216812 25
- 1 216814 35
- 1 216816 50
- 1 216818 70
- 1 216820 95
- 1 216822 120
- 1 216824 150
- 1 216826 185
- 1 216828 240
- 1 216830 300



300-06

Art. No. 220616

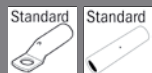
standard, 11-pcs.

SysCon S Set of dies, WM compressed cables

Content: 11 dies, WM compressed cables

- 1 220370 ABS plastic box „SysCon S“
- 2 220377 Foam „SysCon“ 395 x 300 x 20 mm²

- 1 216810/V 16
- 1 216812/V 25
- 1 216814/V 35
- 1 216816/V 50
- 1 216818/V 70
- 1 216820/V 95
- 1 216822/V 120
- 1 216824/V 150
- 1 216826/V 185
- 1 216828/V 240
- 1 216830/V 300



300-06

Art. No. 220615

11-pcs.



Hand truck „SysCon Trolley“

Properties:

- up to 60 kg
- sturdy aluminum frame
- Hand truck shovel: 390 x 280 mm



Art. No. 220602
390 x 1000 x 280 mm



640 mm

390 mm



1000 mm

280 mm

SysCon load securing „SysCon Car“

Properties:

- 21 slots (rear side)
- 3 round holes each side, left and right
- 5 round holes in floor plate
- Maße: width: 475 mm, height: 1080 mm, depth: 360 mm
- **Volume for contents:**
 - max. 5 ABS boxes „SysCon M“
 - max. 8 ABS boxes „SysCon S“

Art. No. 220644
475 x 1080 x 360 mm



Art. No. 220646
475 x 1080 x 360 mm



SysCon starter set

Car securing trolley made from anodised aluminium for HAUPA SysCon system containers. The ideal companion for use out and about. Easy installation in all car models.

- 220370 ABS plastic box „SysCon S“
- 220372 ABS plastic box „SysCon M“
- 220644 SysCon load securing „SysCon Car“
- 220375 Assortment inset „SysCon“
- 220374 Tool inset „SysCon“

ABS plastic box „SysCon S“

outer dimensions: 464 x 335 x 142 mm
inner dimensions: 400 x 300 x 80 mm

without inlay

Art. No. 220370

empty



ABS plastic box „SysCon M“

outer dimensions: 464 x 335 x 212 mm
inner dimensions: 400 x 300 x 150 mm

without inlay

Art. No. 220372

empty



ABS plastic box „SysCon XL“

outer dimensions: 464 x 335 x 362 mm
inner dimensions: 400 x 300 x 312 mm

without inlay

Art. No. 220650

empty



ABS plastic box „SysCon S mobil“

outer dimensions: 464 x 335 x 142 mm
inner dimensions: 400 x 300 x 80 mm
2 swivel rolls
2 swivel rolls with locking function

without inlay

Art. No. 220371

on rolls, empty



ABS plastic box „SysCon M mobil“

outer dimensions: 464 x 335 x 212 mm
inner dimensions: 400 x 300 x 150 mm
2 swivel rolls
2 swivel rolls with locking function

without inlay

Art. No. 220380

on rolls, empty



ABS plastic box „SysCon XL mobil“

outer dimensions: 464 x 335 x 362 mm
inner dimensions: 400 x 300 x 312 mm
2 swivel rolls
2 swivel rolls with locking function

without inlay

Art. No. 220651

on rolls, empty



SysCon S for assortment inserts empty

Content:

- 1 220370 ABS plastic box „SysCon S“
- 2 220399 Foam insert „SysCon“300 x 395 x 10 mm
- 27 220131/M Small boxes M

Art. No. 220620

empty



SysCon S for assortment inserts empty

Content:

- 1 220370 ABS plastic box „SysCon S“
- 2 220399 Foam insert „SysCon“300 x 395 x 10 mm
- 11 220131/M Small boxes M
- 8 220131/L Small boxes L

Art. No. 220628

empty



SysCon M tool box empty

Content:

- 1 220372 ABS plastic box „SysCon M“
- 1 220399 Foam insert „SysCon“ 300 x 395 x 10 mm
- 1 220374 Tools insert „SysCon“
- 1 220379 Tool plate „SysCon“ 11 compartments

Art. No. 220622

empty



SysCon M for assortment inserts empty

Content:

- 1 220372 ABS plastic box „SysCon M“
- 1 220374/S Assortment insert SysCon with foam
- 1 220399 Foam „SysCon“ 395 x 300 x 10 mm
- 18 220131/S Small boxes S
- 15 220131/M Small boxes M
- 4 220131/L Small boxes L

Art. No. 220770

empty



SysCon S tool box empty

Content:

- 1 220370 ABS plastic box „SysCon S“
- 2 220377 Foam insert „SysCon“ 395 x 300 x 20 mm
- 1 220406 Foam insert dies „SysCon“ 395 x 300 x 20 mm

Art. No. 220626

empty

69,⁰⁰



ABS plastic box „SysCon XL“ variable

outer dimensions: 464 x 335 x 362 mm
inner dimensions: 400 x 300 x 312 mm
incl. tool plate and adjustable inner divider

Tool plate

with 10 tool straps
dimensions: 275 x 285 mm

Art. No. 220654

empty

Art. No. 220655

275 x 285 mm



Tool plate SysCon

Art. No. 220379

11 compartments



Tools insert SysCon

Polypropylen

Art. No. 220374

5 compartments



Assortment insert SysCon

Polypropylen

Art. No. 220375

10 compartments

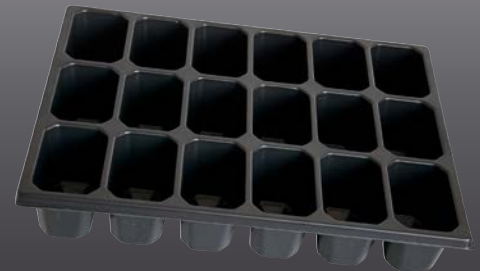


Assortment insert SysCon

Polypropylen

Art. No. 220355

18 compartments



Assortment insert SysCon

Polypropylen, with adjustable compartments

Art. No. 220356

variable



Tools insert SysCon with foam

Polypropylen

Content:

- 1 220374 Tools insert „SysCon“
- 1 220399 Foam „SysCon“ 395 x 300 x 10 mm

Art. No. 220374/S

5 compartments



Assortment insert SysCon with foam

Polypropylen

Content:

- 1 220399 Foam „SysCon“ 395 x 300 x 10 mm
- 1 220375 Assortment insert „SysCon“

Art. No. 220375/S

10 compartments



Assortment insert SysCon with foam

Polypropylen

Content:

- 1 220399 Foam „SysCon“ 395 x 300 x 10 mm
- 1 220355 Assortment insert „SysCon“

Art. No. 220355/S

18 compartments



Assortment insert SysCon with foam

Polypropylen, with adjustable compartments

Content:

- 1 220399 Foam „SysCon“ 395 x 300 x 10 mm
- 1 220356 Assortment insert „SysCon“, with adjustable compartments

Art. No. 220356/S

variable



SysCon small box S 40 x 55 x 53 mm

Maximum of 54 units per ABS plastic box SysCon
1 piece \cong 1 unit

Art. No. 220131/S

40 x 55 x 53 mm



SysCon small box M 80 x 55 x 53 mm

Maximum of 54 units per ABS plastic box SysCon
1 piece \cong 2 units

Art. No. 220131/M

80 x 55 x 53 mm



SysCon small box L 80 x 110 x 53 mm

Maximum of 54 units per ABS plastic box SysCon
1 piece \cong 4 units

Art. No. 220131/L

80 x 110 x 53 mm

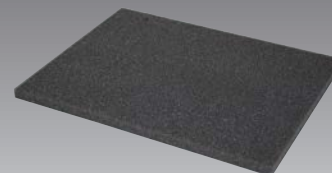


Foam SysCon 395 x 300 x 15 mm

soft foam

Art. No. 220376

395 x 300 x 15 mm

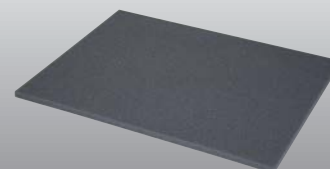


Foam SysCon 395 x 300 x 10 mm

soft foam

Art. No. 220399

395 x 300 x 10 mm

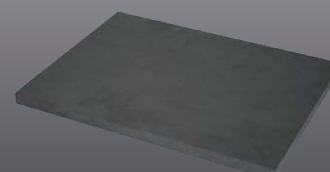


Foam SysCon 395 x 300 x 20 mm

rigid foam

Art. No. 220377

395 x 300 x 20 mm

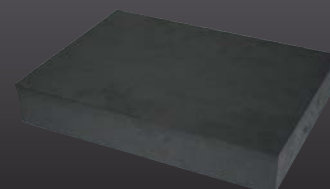


Foam SysCon 395 x 300 x 65 mm

rigid foam

Art. No. 220378

395 x 300 x 65 mm



HAUPA-Group
www.haupa.com

Your electric wholesaler:

ООО "КОМПАНИЯ ОПТУЛС"
Москва, ул.Иловайская, д.3
Тел.: +7 (495) 646-00-96
sale@opttools.ru
www.opttools.ru

Company stamp



haupa®

...convincing solutions

HAUPA GmbH & Co. KG, Königstraße 165-169, D-42853 Remscheid, Phone: +49 (0)2191 8418-0, Fax: +49 (0)2191 8418840, E-Mail: sales@haupa.com.
Errors and technical changes reserved.